



FOR SALE

PRICE: \$18,700 **WOW!!!**

4 NEW TIRES & NEW FRONT/REAR BRAKES

(OVER \$3000 below NADA Retail/**LOWEST PRICED FUSION SE WITHIN 50 MILES ON CARS.COM**) Similar miles/options.

YEAR: 2020

MAKE/MODEL: FORD FUSION SE

MILES: 35,400

VEHICLE INFO: 1.5L/4-cylinder/34 mpg highway/23 mpg city/Excellent condition

4 NEW TIRES/NEW FRONT & REAR BRAKES/Very clean/Carfax on file/Power seat & windows & doors/Rear view camera

SEE ATTACHED WINDOW STICKER FOR FULL CAR OPTIONS

CONTACT INFO: Ask for Rolf or Todd. Phone #815-937-7447.

WARRANTY/GAP: Ask us about our \$0 deductible warranty for 5 years/100K miles PRICED AT \$1614 and GAP at the **LOW LOW LOW PRICE OF \$499** on this vehicle.





Go Further
ford.com

VEHICLE DESCRIPTION
FUSION

2020 FUSION SE FWD
5-PASSENGER
1.5L ECOBOOST ENGINE
6-SPD AUTO TRANSMISSION

LR 236246

EXTERIOR
OXFORD WHITE
INTERIOR
EBONY CLOTH SEATS

STANDARD EQUIPMENT INCLUDED AT NO EXTRA CHARGE

- | | | | |
|--|--|--|--|
| <p>EXTERIOR</p> <ul style="list-style-type: none"> EASY FUEL® CAPLESS FILLER GLASS - SOLAR-TINTED HEADLAMP COURTESY DELAY HEADLAMPS - AUTOLAMP (ON/OFF) MANUAL FOLD POWER MIRRORS TAIL LAMPS - LED WIPERS - RAIN-SENSING | <p>INTERIOR</p> <ul style="list-style-type: none"> 60/40 SPLIT FOLD REAR SEAT AUTO-DIM REARVIEW MIRROR CENTER CONSOLE W/STORAGE DUAL-ZONE ELECTRONIC AUTO CLIMATE CONTROL POWERPOINTS - 12V (2) ROTARY GEAR SHIFT DIAL SEATS-10-WAY PWR DR & 4-WAY MANUAL PASS SMART CHARGING USB PORT(2) TILT STEERING WHL/CRUISE & AUDIO CONTROLS WINDOWS-1-TOUCH UP/DOWN FRONT/REAR WINDOWS-GLOBAL OPEN/CLOSE | <p>FUNCTIONAL</p> <ul style="list-style-type: none"> AM/FM, MP3, 6-SPEAKERS FORD CO-PILOT360™ FORDPASS™ CONNECT 4GWI-FI HOTSPOT TELEMATICS MODEM PUSH-BUTTON START REAR VIEW CAMERA REMOTE KEYLESS ENTRY REVERSE SENSING SYSTEM SECURICODE KEYLESS KEYPAD SIRIUSXM® - SVC N/A AK&H SYNC3® 8" SCRIN W/APPLINK® | <p>SAFETY/SECURITY</p> <ul style="list-style-type: none"> ADVANCETRAC ESC AIRBAG-DRIVER/PASS KNEE AIRBAGS - DUAL STAGE FRONT AIRBAGS - FRONT SEAT MOUNTED SIDE IMPACT AIRBAGS - SIDE AIR CURTAIN LATCH CHILD SAFETY SYSTEM PERIMETER ALARM SECURILOCK® ANTI-THEFT SYS TPMS - INDIVIDUAL <p>WARRANTY</p> <ul style="list-style-type: none"> 3YR/36,000 BUMPER / BUMPER 5YR/60,000 POWERTRAIN 5YR/60,000 ROADSIDE ASSIST |
|--|--|--|--|

INCLUDED ON THIS VEHICLE EQUIPMENT GROUP 150A

(MSRP)

- OPTIONAL EQUIPMENT/OTHER**
- 50 STATE EMISSIONS NO CHARGE
- AUTO START-STOP TECHNOLOGY NO CHARGE
- FORD CO-PILOT360 ASSIST 655.00
- ADAPTIVE CRUISE W/STOP & GO
- VOICE-ACT TOUCH-SCR NAV SYS
- FRONT LICENSE PLATE BRACKET NO CHARGE

PRICE INFORMATION

BASE PRICE	\$24,500.00
TOTAL OPTIONS/OTHER	655.00
TOTAL VEHICLE & OPTIONS/OTHER DESTINATION & DELIVERY	25,155.00
	1,195.00

EPA DOT Fuel Economy and Environment

Gasoline Vehicle

Fuel Economy

27 MPG
combined city/hwy

23 city

34 highway

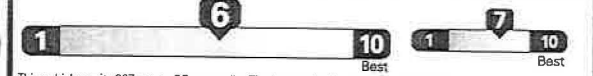
3.7 gallons per 100 miles

Midsize Cars range from 14 to 141 MPG. The best vehicle rates 136 MPGe.

You save \$0
in fuel costs over 5 years compared to the average new vehicle.

Annual fuel cost
\$1,500

Fuel Economy & Greenhouse Gas Rating (tailpipe only) Smog Rating (tailpipe only)



This vehicle emits 327 grams CO₂ per mile. The best emits 0 grams per mile (tailpipe only). Producing and distributing fuel also create emissions; learn more at fueleconomy.gov.

Actual results will vary for many reasons, including driving conditions and how you drive and maintain your vehicle. The average new vehicle gets 27 MPG and costs \$7,500 to fuel over 5 years. Cost estimates are based on 15,000 miles per year at \$2.70 per gallon. MPGe is miles per gasoline gallon equivalent. Vehicle emissions are a significant cause of climate change and smog.

fueleconomy.gov

Calculate personalized estimates and compare vehicles



GOVERNMENT 5-STAR SAFETY RATINGS

Overall Vehicle Score ★★★★★
Based on the combined ratings of frontal, side and rollover. Should ONLY be compared to other vehicles of similar size and weight.

Frontal Crash Driver Passenger ★★★★★
Based on the risk of injury in a frontal impact. Should ONLY be compared to other vehicles of similar size and weight.

Side Crash Front seat Rear seat ★★★★★
Based on the risk of injury in a side impact.

Rollover ★★★★★
Based on the risk of rollover in a single-vehicle crash.

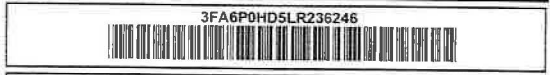
Star ratings range from 1 to 5 stars (★☆☆☆☆), with 5 being the highest. Source: National Highway Traffic Safety Administration (NHTSA).
www.safercar.gov or 1-888-327-4236

FordPass Connect™

- Download the FordPass™ app* and you can:
- Access Vehicle Control Features
 - Remotely start, lock and unlock your vehicle.
 - Locate your vehicle and check approximate fuel range.
 - Receive vehicle health alerts.
- Activate 4G LTE Wi-Fi Hotspot
- New vehicles include a 3-month or 3GB data (whichever comes first) Wi-Fi trial.
 - Connect up to ten Wi-Fi-equipped devices.

The FordPass Connect™ modem is available and spending vehicle data fees. See ford.com for details.

RAMP ONE	RLK6	RAIL	TOTAL MSRP \$26,350.00
RAMP TWO	ITEM #: 41-J207 O/T 2		
<p>This label is affixed pursuant to the Federal Automobile Information Disclosure Act. Gasoline, License, and Title Fees, State and Local taxes are not included. Dealer installed options or accessories are not included unless listed above.</p>			<p>Whether you decide to lease or finance your vehicle, you'll find the choices that are right for you. See your dealer for details or visit www.ford.com/finance.</p> <p>LC131 N RA 2X 040 001532 03 13 20</p>



WARNING: Operating, servicing and maintaining a passenger vehicle, pickup truck, v vehicle can expose you to chemicals including engine exhaust, carbon monoxide, phl lead, which are known to the State of California to cause cancer and birth defects or other reproductive harm. To minimize exposure, avoid breathing exhaust, do not idle the engine except as necessary, service your vehicle in a well-ventilated area and wear gloves or wash your hands frequently when servicing your vehicle. For more information go to www.P65Warnings.ca.gov/passenger-vehicle.

visit ford.com for help













P R N D L



